

SERVICE GUIDE



Frontier
Health®

Where People Are Important



Frontier Health is the region's leading provider of behavioral health, mental health, substance abuse, co-occurring, intellectual and developmental disabilities, recovery, and vocational rehabilitation services throughout Northeast Tennessee and Southwest Virginia. Serving the region since 1957, we are a private, not-for-profit 501(C) 3 organization. Frontier Health offers a range of care to help individuals successfully move toward, sustain recovery and achieve their full potential.

Our outpatient programs provide a seamless program of personalized care from diagnosis through a full continuum of treatment resources. Children & Youth programs provide services in coordination with other professionals like teachers, juvenile court staff and the family physician.

Each year, Frontier Health serves nearly 60,000 adults, children, and adolescents. Clinical services are provided to about 45,000 adults, children, and adolescents and more than 5,000 individuals receive community educational or interpretive services.

Frontier Health maintains state, federal, and national licensure and accreditation ensuring financial and service provider quality and accountability. Staff includes psychiatrists, psychologists, licensed clinical social workers, licensed professional counselors, employment specialists, direct support and other professionals. Frontier Health receives partial funding from Tennessee and Virginia. Services in Virginia are funded in partnership with Planning District One Behavioral Health Services.

The Service Guide lists Frontier Health facilities and programs. While offering a complete continuum of care is a defining element, Frontier Health maintains the focus on our mission — to provide quality services that encourage people to reach their full potential because Frontier Health truly is, "Where People Are Important."

Mission

To provide trauma-focused quality services that encourage people to achieve their full potential.

Vision

To become the community's premier provider, employer and partner in demonstrating standards of excellence for providing accessible high quality behavioral health, substance use and developmental disability services. Our guiding vision will consistently reflect:

"Doing the Right Thing!"

Our Philosophy of Care

Frontier Health provides services to help children, adults and families reach their emotional, mental and physical well-being through a continuum of care. We focus in the areas of mental health, substance use and intellectual and developmental disabilities. We believe each person deserves supportive, respectful, and integrated care that is person-centered and trauma-informed. We tailor services to meet individual needs and achieve recovery. Frontier believes all individuals have the ability to improve and change their lives and treatment plans should be based on each individual's needs. We develop and enhance our services based on outcomes as well as input from the individuals we serve and our community.

Our team consists of caring and highly skilled individuals who are trained in evidence-based practices and make our patients their number one priority. We continually build and maintain collaborative relationships with community partners throughout our 11 county service area to best serve our communities. The enhancement of the emotional, mental and physical well-being of our community is at the center of everything we do.



Some programs and services offered by Frontier Health are funded in part under agreements with the state of Tennessee and in the Commonwealth of Virginia in partnership with Planning District One Behavioral Health Services and Highlands Community Services Board.

Social Media Outlets

Frontier Health has multiple social media outlets we use to help showcase updates, available jobs, weather alerts, and much more! Visit the links below to subscribe and follow us!



FACEBOOK: www.facebook.com/FrontierHealth



Instagram: User Name: [frontier.health](#)



YouTube: User Name: Frontier Health
www.youtube.com/channel/UCQ_-ylyGIv5gSudiKWIo-qA



Linked-In: User Name: Frontier Health
www.linkedin.com/company/2296591/

Where to Find Delays or Closures

Frontier Health facilities may go on an opening delay or close due to inclement weather. We do our best to get this information out to the public in a timely matter. Below you will find where we post these updates during these situations.



1. frontierhealth.org **ORANGE Ticker**

This is the first location these updates are posted and it is located at the top of our website.

2. Facebook & Linked-In

Shortly after (with-in minutes) of updating the orange ticker, our Facebook and Linked-In pages will have an update posted.

Executive Team



Kristie Hammonds
President and CEO
khammond@frontierhealth.org



Diane Bowen
Sr. V.P. of
Operations
dbowen@frontierhealth.org



Rachel Parsons
CFO and Sr. V.P. of
Fiscal Services
rparsons@frontierhealth.org



C. Allen Musil, M.D.
Sr. V.P. of
Medical Services
cmusil@frontierhealth.org



Tim Perry
Sr. V.P. of
Tennessee Children's
Services
tperry@frontierhealth.org



Kim Trantham
Sr. V.P. of VA
Children's Services
Outpatient & Residential
Services
ktrantha@frontierhealth.org



Eric Greene
Sr. V.P. of VA
Adult Outpatient &
Specialty Services
egreene@frontierhealth.org



Ginger Naseri
Sr. V.P. of
Tennessee Adult
Services
vnaseri@frontierhealth.org



Sherri Feathers
Sr. V.P. of
Specialty Services
sfeather@frontierhealth.org

TENNESSEE FACILITIES

Adventure Program

TDMHSAS



1003 Broadway St.
Johnson City, TN 37601

Tel: 423-232-4326

Fax: 423-232-4255

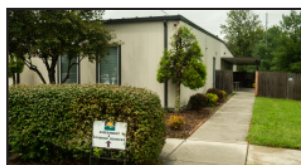
Intensive Outpatient Treatment program for adolescents 13 to 18 years old with substance abuse, mental health and co-occurring problems, helping youths discover better alternatives to facing and coping with stress, while building problem-solving skills. Referrals are made by juvenile courts, schools, family, or client. Services include individual, group and family therapy; therapeutic recreation, leisure and social skills training, educational service, GED training, aftercare and random drug screens.

Problems Addressed:

- Substance Abuse
- Co-occurring Disorders
- Family Problems
- Peer Groups
- School Issues

Assessment & Forensic Services - Kingsport

TDMHSAS



2001 Stone Brook Place
Kingsport, TN 37660

Tel: 423-224-1318

Fax: 423-224-1328

Assessment & Forensic Services assesses children, adolescents and adults who are self-referred, referred by treatment providers, or referred by other community agencies. Psychological assessments help identify and clarify problem areas in order to determine appropriate diagnoses and recommendations.

Referrals are made by local industries, health care providers, legal services, DCS, DHS, law enforcement, emergency agencies, school systems, self referral.

- Diagnostic Evaluations
- Educational Evaluations
- Forensic Evaluations
- Personnel Evaluations
- Other Specialized Evaluations

Behavioral Respite Services



200 Quarry Road
Johnson City, TN 37601
Tel: 423-926-1595

The 24/7 short-term behavioral respite is for individuals with intellectual and developmental disabilities who are experiencing a behavioral crisis and briefly need a respite environment.

The program prepares for the individual's transition back to his/her community.

- Case Management
- 24/7 Mobile Crisis
- Licensed Clinician,
Nursing Staff
Psychiatrist
- Structured Day Activities

Regional Housing Facilitator

The facilitator works with Tennessee's Creating Homes Initiative to provide safe, affordable housing to individuals recovering from the effects of mental illness. The facilitator also works with the Appalachian Regional Coalition on Homelessness to obtain grants to fund short-term and long-term housing and services provided throughout the region for homeless individuals.

Bristol Apartments



2951 Broad St.
Bristol, TN 37620
Tel: 423-306-4488
Fax: 423-990-4401

Residential living services for adults with serious or persistent mental illness and who require minimum assistance to maintain an independent lifestyle.

- Support for Community Living
- Daily Living Skills
- Psychosocial Support Services



26 Midway St.
Bristol, TN 37620
Tel: 423-989-4500
Fax: 423-989-4582

THIS LOCATION WILL
BE MOVING TO
VOLUNTEER PARKWAY
IN SPRING 2023

Outpatient mental health, substance abuse, and co-occurring programs for adults, children, adolescents and families. Case management services (home/community-based services) are also available. Case management supports treatment goals and provides linkage to community resources.

- Individual & Group Psychotherapy
 - Crisis Services
 - Case Management
 - Care Coordination
 - Marital & Family Therapy
 - Pharmacotherapy
 - Consultation & Education Services
 - Psychiatric Consultation
 - Parenting Classes
- Intensive Outpatient A&D / Co-Occurring
 - C&Y Continuous Treatment Team (CTT)
 - Comprehensive Child & Family Treatment (CCFT)
 - Juvenile Court Services
 - School Based Services
 - Community Justice Services,
for more info contact:
communityjustice@frontierhealth.org

Specialized Adult Programs Offered at BRCC

Bridging the Gap / Older Adults Project	SEE PG 38 FOR DESCRIPTION
Mother-Child Connection	SEE PG 39 FOR DESCRIPTION

Specialized Children & Youth (C&Y) Programs Offered at BRCC

Adolescent Drug & Alcohol Recovery	SEE PG 38 FOR DESCRIPTION
Children First	SEE PG 38 FOR DESCRIPTION



426 East G. St.
 Elizabethton, TN 37643
Tel: 423-547-5950
Fax: 423-547-5953

Outpatient mental health, substance abuse, and co-occurring programs for adults, children, adolescents and families. Case management services (home/community-based services) are also available. Case management supports treatment goals and provides linkage to community resources.

- Individual & Group Psychotherapy
- Crisis Services
- Case Management
- Care Coordination
- Marital & Family Therapy
- Pharmacotherapy
- Psychiatric Consultation
- Parenting Classes
- Consultation & Education Services
- C&Y Continuous Treatment Team (CTT)
- Comprehensive Child & Family Treatment (CCFT)
- Juvenile Court Services
- School Based Services
- Community Justice Services,
for more info contact:
communityjustice@frontierhealth.org

Specialized Children & Youth (C&Y) Programs Offered at CTC

Child Abuse Prevention	SEE PG 38 FOR DESCRIPTION
Project BASIC	SEE PG 39 FOR DESCRIPTION

Chatam Apartments

TDMHSAS



2911 Chatam Drive
 Johnson City, TN 37601
Tel: 423-306-4488

Residential living services for adults with serious or persistent mental illness and who require minimum assistance to maintain an independent lifestyle.

- Support for Community Living
- Daily Living Skills



616 E. Church St., Ste. A
Greeneville, TN 37743
Tel: 423-639-3213
Fax: 423-639-4692

Outpatient mental health, substance abuse and co-occurring services for adults provided by licensed or licensed-eligible clinicians. Case management services (home/community-based services) are also available. Case management supports treatment goals and provides linkage to community resources:

- Individual & Group Psychotherapy
- Crisis Services
- Case Management
- Care Coordination Referral to Residential Services
- Psychiatric Consultation
- Pharmacotherapy
- Peer Support Services
- Community Justice Services, for more info contact:
communityjustice@frontierhealth.org

Communication Center for the Deaf & Hard of Hearing



2243 Eddie Williams Road
Johnson City, TN 37601
Tel: 423-434-0447
Fax: 423-928-4222
Sorenson: 423-218-1215
TDD: 423-434-0448

Interpreting and community services for the Deaf or Hard of Hearing in 11 Tennessee counties: Carter, Claibourne, Cocke, Greene, Hamblen, Hancock, Hawkins, Johnson, Sullivan, Unicoi, and Washington. Individuals who are Deaf or Hard of Hearing are not billed for interpreting services. Individuals are provided assistance in accessing services for various personal needs including social and medical. Interpreting services are provided under contract with Federal and State Government Agencies, Businesses, Industries, Hospitals, Service Agencies, Courts and Individuals who are in need of assistance in communicating with people who are Deaf or Hard of Hearing.

- Interpreting Services
- American Sign Language Classes
- Information & Referral
- Advocacy
- Technical Assistance
- Public Awareness /Outreach
- Client Assistance



Turning Point
208 E. Unaka Ave.
Johnson City, TN 37601
Tel: 877-928-9062

24/7 Mobile Crisis Response provides psychiatric, substance abuse, and co-occurring crisis services. Mental Health Crisis situations are managed by experienced professionals: social workers, counselors, and psychiatrists. Referrals are accepted from family, friends, social service agencies, physicians, hospital emergency services, courts and correctional officials.

- Crisis Intervention & Assessment
- Telephone Consultations
- Referral to appropriate levels of care: mental health, substance abuse and co-occurring services and community agencies
- Critical Incident Stress Debriefing
- Crisis Intervention Team Training
- Outreach
- Community education

Crisis Services also offered at these locations:

- Adventure Program
- Bristol Regional Counseling Center
- Charlotte Taylor Center
- Church Street Pavilion
- Crisis Stabilization Unit
- Erwin Mental Health Center
- Hancock County Mental Health Center
- Hawkins County Mental Health Center
- Holston Children & Youth Services
- Holston Counseling Center
- Johnson County Counseling Center
- Nolachuckey-Holston Area Mental Health
- Tennessee Community Support Services
- Watauga Behavioral Health Services

Crisis Stabilization Unit



Turning Point
208 E. Unaka Ave.
Johnson City, TN 37601
Tel: 877-928-9062

The CSU is a 24/7 voluntary program providing a safe and secure environment to those in need of psychiatric stabilization. Adults (male and female) over the age of 18 are served for 3 to 5 days and offered supportive services. Placement at CSU is voluntary and a joint decision between the person served and the mobile crisis staff completing the assessment.

Services include:

- 24 Hour Nurse and Supportive Staff
- Daily Rounding by a Physician or Nurse Practitioner
- Discharge/Case Management Services
- Co-occurring Group
- Individual Therapy
- Family Therapy
- Safety Planning

Walk-In Center

The Walk-In Center is open 24/7 and available to children and adults ages 7 and above experiencing a nonmedical psychiatric or substance misuse emergency. Individuals seeking assistance will receive services which may include:

- Nursing Assessment
- Evaluation by a Qualified Mobile Crisis Professional
- Referral to 23 Hour Observation (Adults)
- Referral to Outpatient Services and Safety Planning
- Psychiatric Hospital
- Crisis Stabilization Unit (Adults)
- A&D Medically Monitored Detoxification/Residential Treatment (Adults)

Crockett Apartments

TDMHSAS



1006 Arnold Road
Greenville, TN 37743
Tel: 423-639-3886
Fax: 423-639-7305

- Support for Community Living
- Daily Living Skills
- Psychosocial Support Services

Residential living services for adults with serious or persistent mental illness and who require minimum assistance to maintain an independent lifestyle.

Crockett Group Home

TDMHSAS



801 Arnold Road
Greenville, TN 37743
Tel: 423-639-3886
Fax: 423-639-7305

- Support for Community Living
- Daily Living Skills
- Psychosocial Support Services

Adult supported living facility for 10 people with mental illness helps residents who can benefit from a structured environment achieve independence within the community.

Eldreth Home

TDMHSAS



2301 E. Center St.
Kingsport, TN 37664
Tel: 423-247-4000
Fax: 423-224-1399

Adult supported living facility for 10 people with mental illness helps residents who can benefit from a structured environment achieve independence within the community.

- Support for Community Living
- Daily Living Skills
- Psychosocial Support Services

Employee Assistance Program Contract Services

Contract Comprehensive EAP Services provided through outpatient sites for regional businesses and industries.

(www.frontierhealth.org/eap)

- Critical Incident Stress Debriefing
- 24 Hours a Day, 7 Days a Week
- Follow-Up to Ensure Referral Satisfaction
- Short-Term Counseling
- Assessments & Referrals
- Educational Seminars

P.O. Box 9054
Gray, TN 37615

Zoe Swavely: 423-467-3719
zswavely@frontierhealth.org

FOR FRONTIER HEALTH EMPLOYEES
Diana Finlay: 423-547-6554



218 N. Main St.
Erwin, TN 37650
Tel: 423-743-1470
Fax: 423-743-1472

Outpatient mental health, substance abuse, and co-occurring programs for children, adolescents, and adults. Case management services (home/community-based services) are also available. Case management supports treatment goals and provides linkage to community resources:

- Individual & Group Psychotherapy
- Crisis Services
- Marital & Family Therapy
- Case Management
- Care Coordination Pharmacotherapy
- Mother-Child Connection
- Consultation & Education Services
- Intensive Outpatient
- Psychiatric Consultation
- C&Y Continuous Treatment Team (CTT)
- Comprehensive Child & Family Treatment (CCFT)
- Juvenile Court Services
- School Based Services
- Community Justice Services,
for more info contact:
communityjustice@frontierhealth.org

Fairmount Group Home

TDIDD



719 Kentucky Ave.
Bristol, TN 37620
Tel: 423-968-2532
Fax: 423-968-2532

Residential facility for adult males with intellectual and developmental disabilities that provides necessary supports to ensure their highest level of residential independence and successful community living.

- Ongoing Support Services
- Daily Living Skills

Freedom Peer Support Center



616 E. Church St., Ste. A
Greeneville, TN 37743
Tel: 423-639-1313

- Transportation
- Community Outreach
- Peer Support
- Advocacy
- Education
- Socialization
- Recreational Opportunities

Persons who have received mental health services develop their own recovery-based programs to enhance recovery skills and enhance personal, social and community living skills.

Friendship Connection Peer Support Center



2017 Stonebrook Place
Kingsport, TN 37660
Tel: 423-247-0160

- Transportation

- Peer Support
- Advocacy
- Education
- Socialization
- Recreational Opportunities
- Community Outreach

Persons who have received mental health services develop their own recovery-based programs to enhance recovery skills and enhance personal, social and community living skills.

Friendship House Peer Support Center



2243 Eddie Williams Road
Johnson City, TN 37601
Tel: 423-232-4264

- Transportation

- Peer Support
- Advocacy
- Education
- Socialization
- Recreational Opportunities
- Community Outreach

Persons who have received mental health services develop their own recovery-based programs to enhance recovery skills and enhance personal, social and community living skills.

Frontier Health Corporate Office (Corp)



1167 Spratlin Park Drive
P.O. Box 9054
Gray, TN 37615-9054
Tel: 423-467-3600
Fax: 423-467-3710

- Administration
- Business Development
- Financial Services
- Grant Development
- Human Resources

- Management Information Systems
- Communications and Public Relations
- Payroll
- Purchasing

Mental Health Awareness Training

Contact: 423-895-4436

Mental Health First Aid is an 8-hour course that teaches you how to identify, understand and respond to signs of mental illnesses and substance use disorders. The training gives you the skills you need to reach out and provide initial help and support to someone who may be developing a mental health or substance use problem or experiencing a crisis. Frontier Health provides both the adult and youth version and encourages the faith-based communities to access this training through a SAMSHA funded program.

Additional trainings on specific topics such as Adverse Childhood Experiences (ACES), suicide prevention, parenting, and other behavioral health and substance use issues can be provided on request.



1135 Volunteer Parkway
Suite 14
Bristol, TN 37620
Tel: 423-878-1600
Fax: 423-878-1606

**THIS LOCATION WILL
BE MOVING TO
VOLUNTEER PARKWAY
IN SPRING 2023**

Frontier Industries programs provide opportunities for individuals with disabilities to learn and master fundamental life skills necessary to achieve independence and to live and/or work in the community of their choice.

- Work Skills Assessment
- Employment Discovery
- Community Discovery and Integration
- Job Development and Placement/
Supported Employment
- Individual Placement and Support
Employment Services
- Employer Support
- On the Job Training and Coaching
- Follow Up Support
- Supported Living



2017 Stonebrook Place
Kingsport, TN 37660
Tel: 423-224-1417
Fax: 423-224-1418

Frontier Industries programs provide opportunities for individuals with disabilities to learn and master fundamental life skills necessary to achieve independence and to live and/or work in the community of their choice.

- Work Skills Assessment
- Employment Discovery
- Community Discovery and Integration
- Job Development and Placement/
Supported Employment
- Individual Placement and Support
Employment Services
- Employer Support
- On the Job Training and Coaching
- Follow Up Support
- Supported Living



208 & 210 Quarry Road
Johnson City, TN 37601
Tel: 423-232-7234
Fax: 423-232-7235

Two adjacent Intensive Long-term Adult Supported Living Facilities, each serving 8 people with serious and persistent mental illness. They provide 24/7 residential care with coordinated and structured treatment and rehabilitation services including: personal care services, training in community living skills, vocational skills and socialization/recreational activities.

- Personal Care Services/Daily Living Skills
- Support for Community Living
- Psychosocial Support Services
- Mental Health Treatment and Rehabilitation
- Job Development and Placement

Grant-Widner

TDMHSAS



4121 Old Jonesboro Road
Bristol, TN 37620
Tel: 423-652-7378
Fax: 423-990-4405

Adult supported living facility for 10 people with mental illness helps residents who can benefit from a structured environment achieve independence within the community.

- Daily Living Skills
- Support for Community Living
- Ongoing Support Services



210 River Road
Sneedville, TN 37869
Tel: 423-733-2216
Fax: 423-733-2450

Outpatient mental health, substance abuse, and co-occurring programs for children, adolescents, and adults. Case management services (home/ community-based services) are also available. Case management supports treatment goals and provides linkage to community resources.

- Individual & Group Psychotherapy
- Crisis Services
- Marital & Family Therapy
- Case Management
- Care Coordination Pharmacotherapy
- Consultation & Education Services
- Psychiatric Consultation
- C&Y Continuous Treatment Team (CTT)
- Comprehensive Child & Family Treatment (CCFT)
- Juvenile Court Services
- School Based Services
- Community Justice Services,
for more info contact:
communityjustice@frontierhealth.org

Specialized Children & Youth (C&Y) Programs Offered at Hancock Co.

Alcohol & Drug Prevention

A school- and community-based program leads students in a small group process of 12 sessions. Helps Students:

- Identify Personal Problems
- Retain Value
- Restore Productivity
- Seek Help

Project BASIC SEE PG 39 FOR DESCRIPTION

Student Assistance Program SEE PG 40 FOR DESCRIPTION

Hancock County Peer Support Center

TDMHSAS



210 River Road
Sneedville, TN 37869
Tel: 423-733-1540

- Transportation
- Peer Support
- Advocacy
- Education
- Socialization
- Recreational Opportunities
- Community Outreach

Persons who have received mental health services develop their own recovery-based programs to enhance recovery skills and enhance personal, social and community living skills.



101 Lena Drive
Rogersville, TN 37857
Tel: 423-272-9239
Fax: 423-272-1803

Outpatient mental health, substance abuse, and co-occurring programs for children, adolescents, and adults. Case management services (home/community-based services) are also available. Case management supports treatment goals and provides linkage to community resources.

- Individual & Group Psychotherapy
- Crisis Services
- Marital & Family Therapy
- Case Management
- Care Coordination Pharmacotherapy
- Mother-Child Connection
- Consultation & Education Services
- Psychiatric Consultation
- Intensive Outpatient A&D/
Co-Occurring
- C&Y Continuous Treatment Team (CTT)
- Comprehensive Child & Family
Treatment (CCFT)
- Juvenile Court Services
- School Based Services
- Community Justice Services,
for more info contact:
communityjustice@frontierhealth.org
- Individual Placement and Support
Employment Services

Specialized Children & Youth (C&Y) Programs Offered at Hawkins Co.

Project BASIC

SEE PG 39 FOR DESCRIPTION

Higher Ground Peer Support Center

TDMHSAS



873 S. Shady St.
Mountain City, TN 37683
Tel: 423-727-8685
Fax: 423-727-5953

Persons who have received mental health services develop their own recovery-based programs to enhance recovery skills and enhance personal, social and community living skills.

- Peer Support
- Advocacy
- Education
- Socialization
- Recreational Opportunities
- Community Outreach
- Transportation



2001 Stonebrook Place
Kingsport, TN 37660
Tel: 423-224-1000
Fax: 423-224-1023

Evaluation and treatment of child and adolescent mental health, substance abuse and co-occurring disorders are provided. Case management supports treatment by helping individuals figure out what services are needed, empowering through person centered planning. Case management is a home/community based service.

- Individual, Family & Group Psychotherapy
- Crisis Services
- Parenting Classes
- Psychiatric Consultation
- Pharmacotherapy
- Consultation & Education Services
- Case Management
- Care Coordination
- C&Y Continuous Treatment Team (CTT)
- Comprehensive Child & Family Treatment
- Tobacco Classes
- Juvenile Court Services

Specialized Children & Youth (C&Y) Programs Offered at HC&Y

Substance Abuse Prevention Program	SEE PG 40 FOR DESCRIPTION
Regional Intervention Program (RIP)	SEE PG 40 FOR DESCRIPTION
Student Assistance Program	SEE PG 40 FOR DESCRIPTION

Holston Counseling Center (HCC)



1570 Waverly Road
Kingsport, TN 37664
Tel: 423-224-1300
Fax: 423-224-1375

Outpatient mental health, substance abuse, and co-occurring programs for children, adolescents, and adults. Case management services (home/community-based services) are also available. Case management supports treatment goals and provides linkage to community resources.

- Individual & Group Psychotherapy
- Crisis Services
- Marital & Family Therapy
- Case Management
- Care Coordination Pharmacotherapy
- Mother-Child Connection
- Consultation & Education Services
- Intensive Outpatient A&D/Co-Occurring
- Psychiatric Consultation
- C&Y Continuous Treatment Team (CTT)
- Comprehensive Child & Family Treatment (CCFT)
- Community Justice Services, for more info contact: communityjustice@frontierhealth.org

Specialized Adult Programs Offered at HCC

Bridging the Gap / Older Adults Project	SEE PG 38 FOR DESCRIPTION
Mother-Child Connection	SEE PG 39 FOR DESCRIPTION



1800 Mountain View Rd.
Kingsport, TN 37664
Tel: 423-247-6340
Fax: 423-578-3951

- Daily Living Skills
- Support for Community Living
- Ongoing Support Services

Adult supported living facility for 10 people with mental illness helps residents who can benefit from a structured environment achieve independence within the community.

Johnson County Counseling Center (JCCC)



318 Donnelly St.
Mountain City, TN 37683
Tel: 423-727-2100
Fax: 423-727-2110

Outpatient mental health, substance abuse, and co-occurring programs for children, adolescents, and adults. Case management services (home/community-based services) are also available. Case management supports treatment goals and provides linkage to community resources.

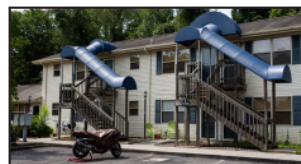
- Individual & Group Psychotherapy
- Crisis Services
- Marital & Family Therapy
- Case Management
- Care Coordination Pharmacotherapy
- Mother-Child Connection
- Consultation & Education Services
- Psychiatric Consultation
- C&Y Continuous Treatment Team (CTT)
- Comprehensive Child & Family Treatment (CCFT)
- Juvenile Court Services
- School Based Services
- Community Justice Services,
for more info contact:
communityjustice@frontierhealth.org

Specialized Children & Youth (C&Y) Programs Offered at JCMHC

Child Abuse Prevention

SEE PG 38 FOR DESCRIPTION

Kingsport Apartments



1326 Tranbarger Drive
Kingsport, TN 37665
Tel: 423-247-4000
Fax: 423-224-1399

- Support for Community Living
- Daily Living Skills
- Psychosocial Support

Residential living services for adults with serious or persistent mental illness and who require minimum assistance to maintain an independent lifestyle.



516 Swadley Rd.
Johnson City, TN 37601
Tel: 423-926-9001
Fax: 423-232-2752

- Support for Community Living
- Daily Living Skills
- Psychosocial Support

Supported Living facility for 10 adults with mental illness helps residents achieve independence within the community.



433 New Beason Well Rd.
Kingsport, TN 37660
Tel: 423-288-1828
Fax: 423-288-1809

Group Home for adolescent females ages 12 to 18. Youth may be delinquent, unruly, or dependent and neglected. Daily structured program builds on identified strengths. The program strongly encourages family involvement to achieve the ultimate goal of family reunification. Independent living or foster family care may be sought for youth with no viable family resource.

Assessment services for state custody youth on referral by the Tennessee Department of Children's Services.

- Daily Life Skills Group
- Individual, Group & Family Counseling
- Independent Living Skills
- Therapeutic Recreation
- Substance Abuse Counseling
- Family Reunification
- Aftercare Services

Runaway Program, including Project Safe Place

Tel: 877-288-1828

Provides temporary, emergency shelter and counseling to youth who are runaways, throw-aways, or are escaping unresolved family conflicts. This nationwide program is the only one of its kind within a 100-mile radius where youth can seek 72-hour sanctuary. The goal of the program is to intervene quickly, and assist the youth and their family with reunification. As an outreach of Link House, Project Safe Place seeks to educate youth to access services through Link House instead of running away and possibly facing uncertain dangers on the streets.



2940 Broad St.
Bristol, TN 37620
Tel: 423-968-1681
Fax: 423-990-4401

- Support for Community Living
- Daily Living Skills
- Psychosocial Support

Adult Supported Living facility for people with mental illness helps residents who can benefit from a structured environment achieve independence within the community.



401 Holston Drive
Greeneville, TN 37743
Tel: 423-639-1104
Fax: 423-636-8365

Outpatient mental health, substance abuse, and co-occurring programs for children, adolescents, and adults. Case management services (home/community-based services) are also available. Case management supports treatment goals and provides linkage to community resources.

- Individual & Group Psychotherapy
- Crisis Services
- Marital & Family Therapy
- Case Management
- Care Coordination Pharmacotherapy
- Mother-Child Connection
- Consultation & Education Services
- Intensive Outpatient A&D/
Co-Occurring
- Psychiatric Consultation
- C&Y Continuous Treatment Team (CTT)
- Comprehensive Child & Family
Treatment (CCFT)
- Juvenile Court Services
- School Based Services
- Community Justice Services,
for more info contact:
communityjustice@frontierhealth.org

Specialized Children & Youth (C&Y) Programs Offered at Nolachuckey-Holston

Project BASIC

SEE PG 39 FOR DESCRIPTION

Open Arms Peer Support Center

TDMHSAS



266 North St.
Bristol, TN 37620
Tel: 423-274-8100

THIS LOCATION WILL
BE MOVING TO
VOLUNTEER PARKWAY
IN SPRING 2023

Persons who have received mental health services develop their own recovery-based programs to enhance recovery skills and enhance personal, social and community living skills.

- Peer Support
- Advocacy
- Education
- Socialization
- Recreational Opportunities
- Community Outreach
- Transportation

Plymouth Road Apartments



2802 Plymouth Rd.
Johnson City, TN 37601
Tel: 423-306-4488
Fax: 423-232-2768

- Support for Community Living
- Daily Living Skills
- Psychosocial Support Services

Residential living services for adults with serious or persistent mental illness and who require minimum assistance to maintain an independent lifestyle.



2221 Memorial Court
Kingsport, TN 37660
Tel: 423-245-1121
Fax: 423-578-3950

- Support for Community Living
- Daily Living Skills

Adult Supported Living facility for adults with mental illness helps residents who can benefit from a structured environment achieve independence within the community.

Safe House

TDOF, TOCJP



P.O. Box 3426
Kingsport, TN 37664
Hotline - Johnson City: (423) 926-7233
Hotline - Kingsport: (844) 578-7233

Safe House provides 28 beds in two distinct domestic violence shelters, located in undisclosed locations in Kingsport and Johnson City. Safe House provides safe confidential shelter to any victim of domestic violence as well as their children. Safe House staff are also collocated at the Family Justice Centers in Johnson City and Blountville.

Services to victims include:

- A 24/7 Hotline & Advocacy to Victims of Domestic Violence or Sexual Assault
- 24/7 Coordination with Sexual Assault Nurse Examiners (SANE Nurses).
- 24/7 Sexual Assault Advocate on call to Accompany Victims to Area Hospitals
- Transitional Housing Support
- Case Management
- Assistance with Safety Planning and Orders of Protection
- Transportation

Safe Place

Tel: 1-800-RUNAWAY (1-800-786-2929)



*For Youth...Someplace To Go.
Someone To Help.*

Safe Place is a national youth outreach and prevention program for young people under the age of 18 (up to 21 years of age in some communities) in need of immediate help and safety. As a collaborative community prevention initiative, Safe Place designates businesses and organizations as Safe Place locations, making help readily available to youth in communities across the country. Safe Place locations include: libraries, YMCAs, fire stations, public buses, various businesses, and social service facilities.



LEE

HANCOCK

HAWKINS

GREENE



Frontier
Health®

Where People Are Important

ISE

COTT

WASHINGTON

SULLIVAN

JOHNSON

WASHINGTON

CARTER

UNICOI



1113 King Springs Rd.
Johnson City, TN 37601
Tel: 423-928-4802
Fax: 423-232-2768

- Support for Community Living
- Daily Living Skills

Adult Supported Living facility for 8 people with mental illness helps residents who can benefit from a structured environment achieve independence within the community.

Sullivan House

TDCS



852 Youth Center Rd.
Blountville, TN 37617
Tel: 423-279-2150
Fax: 423-279-2159

Group Home for males ages 13 to 18 who are referred by Juvenile Courts in Bristol, Kingsport, and Sullivan County or who are in the custody of DCS. Youth may be delinquent, unruly, or chronically truant from school. This program assists youths by re-evaluating goals, engaging family in process and providing the entire family with the tools to help youth successfully re-integrate into a family setting at discharge.

- Daily Life Skills Group
- Individual, Group & Family Counseling
- Case Management
- Family Involvement
- Educational Planning
- Peer Conflict Resolution
- Therapeutic Recreation
- Development of Long-Term Goals
- Coordinate/Partner with Juvenile Courts

Tennessee Community Support Services

TDMHSAS



266 North St.
Bristol, TN 37620
Tel: 423-989-4558
Fax: 423-989-4570

THIS LOCATION WILL
BE MOVING TO
VOLUNTEER PARKWAY
IN SPRING 2023

Outpatient mental health, substance abuse and co-occurring services for adults. Case management services (home/community-based services) are also available. Case management supports treatment goals and provides linkage to community resources.

- Individual, Family & Group Therapy
- Case Management
- Care Coordination
- Crisis Services
- Psychiatric Consultation
- Pharmacotherapy
- Peer Support Services
- Community Justice Services,
for more info contact:
communityjustice@frontierhealth.org



2001 Stonebrook Place
Kingsport, TN 37660
Tel: 423-224-1067
Fax: 423-224-1095

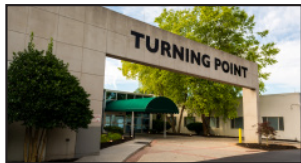
www.frontierhealth.org/foster/traces/

Operating throughout Northeast Tennessee, TRACES Therapeutic Foster Care & Adoptions serves youth in state custody, ages birth to 18. Foster parents who are recruited and intensively trained by TRACES staff help prepare youth for reunification with family, or adoption. The goal is to provide a therapeutic home-like environment and develop a viable, long-term permanency plan as quickly as possible.

- Increase Healthy Relationship Skills
- Improve Problem-Solving and Communication Skills
- Appropriate Use of Free Time Independent Living Skills
- Increase Self-Esteem
- Intensive Reunification Services
- Adoption Services
- Recruitment & Retention of Quality Foster & Adoptive Families
- Individual, Group, & Family Therapy
- Private Domestic & International Adoptive Home Studies

Turning Point

TDMHSAS



208 E. Unaka Ave.
Johnson City, TN 37601
Tel: 423-926-0940
Fax: 423-926-4202

- Intensive Outpatient Recovery Oriented Services for Substance Use Disorder
- Individual, Family and Group Therapy
- Medical Evaluation Referral
- Relapse Education
- Follow-up Services

Assessment & Forensic Services - Johnson City

Assessment & Forensic Services assesses children, adolescents and adults who are self-referred, referred by treatment providers, or referred by other community agencies. Psychological assessments help identify and clarify problem areas in order to determine appropriate diagnoses and recommendations.

Referrals are made by local industries, health care providers, legal services, DCS, DHS, law enforcement, emergency agencies, school systems, self referral.

- Diagnostic Evaluations
- Educational Evaluations
- Forensic Evaluations
- Personnel Evaluations
- Other Specialized Evaluations

Community Justice & Recovery Courts

Behavioral Health Liaisons & Recovery Court staff assist individuals in the legal system with mental health needs and/or substance use disorders. The program promotes diversion from jail to meaningful support services and resources in the community.

Services include:

- Communicating with Police Agencies
- Assistance at Court Hearings
- Meetings with Incarcerated Individuals
- Transitioning from Jail to Community
- Working with Families
- Referrals to Treatment
- Training to Law Enforcement Agencies

Crisis Stabilization Unit (CSU)

The CSU is a 24/7 voluntary program providing a safe and secure environment to those in need of psychiatric stabilization. Adults (male and female) over the age of 18 are served for 3 to 5 days and offered supportive services. Placement at CSU is voluntary and a joint decision between the person served and the mobile crisis staff completing the assessment.

Services include:

- 24 Hour Nurse and Supportive Staff
- Daily Rounding by a Physician or Nurse Practitioner
- Discharge/Case Management Services
- Co-occurring Group
- Individual Therapy
- Family Therapy
- Safety Planning

Detoxification Unit

A 16 bed medically monitored detoxification unit serves adults over the age of 18 in need of detoxification from drugs and/or alcohol. 24/7 nursing and close monitoring by a physician or nurse practitioner provides safe and effective treatment. Daily groups and discharge planning are provided to move individuals toward recovery and continued treatment. Residents transition to residential services (Magnolia Ridge Unit or Willow Ridge) or intensive outpatient services. Individuals can self refer to detox and services are voluntary.

Referrals may also include:

- Walk-in Center/Mobile Crisis Staff
- Medical or Psychiatric Hospitals
- Detention Centers/Judges/Courts
- Physicians/Medical Practices
- Outpatient Services

Tel: 800-332-7281

Health, Outreach, Prevention & Empowerment: Education/Prevention Services offered to individuals and groups. Information is provided on HIV, STD's, Hepatitis, Harm Reduction, Abstinence and Condom Use.



Services provided to Carter, Greene, Hancock, Hawkins, Johnson, Sullivan, Unicoi, and Washington Counties.

Prevention Services

- Education
- Free Confidential HIV Rapid Testing and Counseling
- Free Confidential HCV Rapid Testing and Counseling
- Condom Distribution

Case Management Services

- HIV Case Management
- Nutrition Assistance Services
- Transportation Assistance to Core Medical Appointments.
- Housing Assistance
- Utility Assistance

Juvenile Justice Reform

For questions or referrals, please contact our Program Coordinator at **(423) 571-4949**

The Juvenile Justice Reform Program (JJR) is a new program offered by Frontier Health focused on diverting youth from juvenile court involvement, decreasing the rate of out-of-home placements or placements in state's custody, and increasing connections youth have with their families and communities.



The JJR program provides a Behavioral Health Court Liaison in each of the 11 courts with juvenile jurisdiction in the Northeast Region. Behavioral Health Court Liaisons will provide evidence based assessments and immediate access to behavioral health services.

Referrals can come from various sources, including directly from the court. If a youth is assessed as being at risk for out-of-home placement, the youth and family will be able to access FIRST (Family In-Home Resiliency and Stabilization Team). Each team, consisting of a therapist and care manager, will provide intensive in-home therapy and care management utilizing Multi-Dimensional Family Therapy (MDFT).

Magnolia Ridge Unit

48 residential treatment beds serving males over the age of 18 with addiction and co-occurring mental health needs. While most referrals are step down from the detox unit, referrals are accepted from all sources. Magnolia Ridge Unit offers a multi disciplinary approach, using evidenced based practices to move individuals toward recovery.

Services include:

- Co-Occurring Mental Health & Addiction Treatment
- Daily Nursing and Physician Availability
- Individual and Group Therapy
- Family Education
- Case Management and Aftercare Planning

** Females are served in residential treatment at Willow Ridge 900 Buffalo Street, Johnson City, Tn.*

Tennessee Crisis Services

24/7 suicide/crisis hotline and mobile crisis services are available to children and adults of all ages experiencing a psychiatric, substance abuse or co-occurring emergency. Referrals are accepted from all sources including families, friends, hospital emergency departments, primary care offices, schools, courts, or self referrals. Qualified behavioral health professionals provide an assessment and refer individuals to the most appropriate level of care, which may include:

- Outpatient Services with Comprehensive Safety Planning
- Psychiatric Hospitalization
- Crisis Stabilization Unit (CSU)
- 23 Hour Observation
- A&D Medically Monitored Detoxification/Residential Treatment

Walk-In Center

The Walk-In Center is open 24/7 and available to children and adults ages 7 and above experiencing a nonmedical psychiatric or substance misuse emergency. Individuals seeking assistance will receive services which may include:

- Nursing Assessment
- Evaluation by a Qualified Mobile Crisis Professional
- Referral to 23 Hour Observation (Adults)
- Referral to Outpatient Services and Safety Planning
- Psychiatric Hospital
- Crisis Stabilization Unit (Adults)
- A&D Medically Monitored Detoxification/Residential Treatment (Adults)

Victory Center - Greeneville (VCG)

TDMHSAS



Victory Center at Church Street Pavilion
616 E. Church St., Ste. A
Greeneville, TN 37743
Tel: 423-638-4540
Fax: 423-638-4211

A psychiatric rehabilitation program for people with physical, mental, emotional and/or co-occurring disabilities.

Specialized Adult Programs Offered at VCG

Recovery Education Center

SEE PG 39 FOR DESCRIPTION

Employment Services

SEE PG 38 FOR DESCRIPTION

Victory Center - Johnson City (VCJ)

TDMHSAS



2243 Eddie Williams Rd.
Johnson City, TN 37601
Tel: 423-975-6000
Fax: 423-928-4222

A psychiatric rehabilitation program for people with physical, mental, emotional and/or co-occurring disabilities.

Specialized Adult Programs Offered at VCJ

Recovery Education Center

SEE PG 39 FOR DESCRIPTION

Employment Services

SEE PG 38 FOR DESCRIPTION

Victory Center - Kingsport (VCK)

TDMHSAS



Victory Center at Frontier Industries Kingsport
2017 Stonebrook Place
Kingsport, TN 37660
Tel: 423-224-1417
Fax: 423-224-1418

A psychiatric rehabilitation program for people with physical, mental, emotional and/or co-occurring disabilities.

Specialized Adult Programs Offered at VCK

Recovery Education Center

SEE PG 39 FOR DESCRIPTION

Employment Services

SEE PG 38 FOR DESCRIPTION



109 W. Watauga Ave.
Johnson City, TN 37604

Adult Services

Tel: 423-232-2600

Fax: 423-232-2646

Children & Youth Services

Tel: 423-232-2700

Fax: 423-232-2714

Outpatient mental health, substance abuse, and co-occurring programs for adults, children, adolescents, and families. Case management services (home/community-based services) are also available. Case management supports treatment goals and provides linkage to community resources.

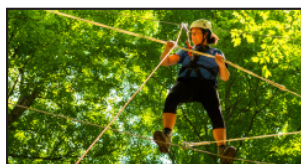
- Individual & Group Psychotherapy
- Marital & Family Therapy
- Pharmacotherapy
- Crisis Services
- Case Management
- Care Coordination
- Consultation & Education Services
- Parenting Classes
- Peer Support Services
- Psychiatric Consultation
- C&Y Continuous Treatment Team (CTT)
- Juvenile Court Services
- School Based Services
- Intensive Outpatient A&D / Co-Occurring
- Comprehensive Child & Family Treatment (CCFT)
- Community Justice Services, for more info contact: communityjustice@frontierhealth.org

Specialized Adult Programs Offered at WBHS

Mother-Child Connection

SEE PG 39 FOR DESCRIPTION

Greenwood Challenge Ropes Course



Outdoor Learning Environment, Physical & Mental Problem-Solving

CALL TO SCHEDULE

Johnson City, TN

Tel: 423-232-2700

The Greenwood Challenge is a carefully planned outdoor learning environment with simple to complex elements with both mental and physical problem-solving activities to resolve group challenges in a safe and supportive environment. No special skills are required. Events are structured for anyone of normal physical condition. Everyone is encouraged to participate at his/her own level regardless of age, shape or size. The program is designed to develop courage, vision, team spirit, and leadership skills.

- Schools, Youth Groups and Educators, Athletic Groups, Individuals and Families, Church Groups, Chamber, Community Groups, Civic Organizations, Business and Corporate, Health Care Providers, Service Organizations
- Simple to Complex Elements

Specialized Children & Youth (C&Y) Programs Offered at WBHS

Child Abuse Prevention

SEE PG 38 FOR DESCRIPTION

Family Links

SEE PG 38 FOR DESCRIPTION

Regional Intervention Program (RIP)

SEE PG 40 FOR DESCRIPTION

Student Assistance Program

SEE PG 40 FOR DESCRIPTION

Mental Health Awareness Training

SEE PG 39 FOR DESCRIPTION

Willow Ridge



900 Buffalo Street
Johnson City, TN 37604
Tel: 423-461-7750
Fax: 423-461-7753

19 residential treatment beds serve females over the age of 18 with addiction and or co-occurring mental health needs. While most referrals are step down from the Turning Point detox unit, referrals are accepted from all sources. Willow Ridge offers a gender specific, multi disciplinary approach, using evidenced based practices to move individuals toward recovery.

- Individual and Group Therapy
- Family Education
- Relapse Prevention
- Co-Occurring Mental Health & Addiction Treatment
- Daily Nursing and Physician Availability
- Case Management and Aftercare Planning

VIRGINIA FACILITIES

Addington Hall

VDBHDS, VDSS



1431 Duff-Pat Hwy.
Duffield, VA 24244

Tel: 276-431-4370

Fax: 276-431-2863

Community-based child and adolescent services for Lee, Scott, and Wise counties, and the city of Norton.

Infant & Toddler Connection of Dilenowisco

Tel: 276-431-3521 • 800-453-4332

A child and family may receive early intervention supports and services if the child is: up to 3 years old and has certain levels of developmental delay, differences in development and/or a diagnosed condition. Referrals are made by pediatricians but parents can call to request a screening if they have concerns about their child. Children receive services in their natural environment, such as home or day care.

- Care Coordination
- Speech Therapy
- Occupational Therapy
- Special Instruction
- Physical Therapy

Prevention Services

Tel: 276-431-4370

Working with the community to target risk factors and increase protective factors.

- Children In-between
- Suicide Prevention (Applied Suicide Intervention Skills Training - ASIST)
- Violence and Bullying Awareness (Communities Against Youth Violence)
- Alcohol, Tobacco and Other Drug Awareness
- Mental Health First Aid
- Parenting Education
- Child Abuse Awareness
- Community Coalition Collaborations
- Information and Education Resources

VALUES Therapeutic Foster Care

**Tel: 888-443-1804 • Email: values@frontierhealth.org
www.frontierhealth.org/foster/values/**

VALUES provides intensive services to youth with serious emotional issues. The comprehensive service model involves the youth, family members, foster parents, human service professionals, and behavioral health providers. The trauma informed approach addresses the needs of children who experienced abuse, neglect and trauma. Also, Post Adoption Services are provided to families utilizing community based services and supports.

- Increase Healthy Relationship Skills
- Improve Problem-Solving Skills
- Learn to Structure Free Time
- Increase Independent Living Skills
- Increase Self-Esteem
- Increase Rational Thinking Process
- Learn to Control Impulses



VALUES

Appalachia Court Apartments



250 Park St.
Jonesville, VA 24263

Please contact Lee County Behavioral Health Services for more information: **Tel: 276-346-3590**

11-unit apartment complex provides supported housing for adults with serious or persistent mental illnesses who require minimum assistance to maintain an independent lifestyle.

- Support for Community Living
- Daily Living Skills

Bargains Unlimited Thrift Store



622 Powell Avenue East
Big Stone Gap, VA, 24219
Tel: 276-523-7783

Bargains Unlimited Thrift Store offers previously-owned items as a hands-on training site for people with disabilities including: sorting, sizing, pricing, stocking merchandise, operating cash register, customer service, and janitorial duties.

Developmental Services

VDBHDS



622 Powell Ave. East
Big Stone Gap, VA 24219
Tel: 276-523-0682
Fax: 276-523-0684

Developmental Services provides a continuum of services to children, youth and adults with intellectual or developmental disabilities including case management, day support services, residential support, and community engagement. All services provided are referred through Case Management. Day Support Services are provided through the Adult Activity Center five days a week. Transportation can be arranged. The Adult Activity Center provides training for daily living activities including grooming, housekeeping, shopping, cooking and basic self-care skills.

- Case Management
- Day Support Services
- Residential Support
- Community Engagement

Four Seasons Greenhouse



2637 4th Ave. East
Big Stone Gap, VA 24219
Tel: 276-523-4028

- Paid Work Adjustment Training
- Sheltered Employment

People with disabilities are empowered to achieve independence through employment. Four Seasons offers vegetable and flowering plants, herbs and hanging baskets. The hands-on training site is for people with disabilities who receive training to receive transferrable work skills.

Independence House

VDBHDS



2532 4th Ave. East
Big Stone Gap, VA 24244
Tel: 276-523-4357
Fax: 276-523-2527

- Support for Community Living
- Daily Living Skills
- Socialization & Interpersonal Skills
- Psychosocial Rehabilitation

Community-based clubhouse model of psychosocial rehabilitation focuses on psychiatric rehabilitation through training, socialization and peer support in the community. The Kitchen Unit provides training in preparation, food service, menu planning, shopping and maintenance. The Communications Unit offers training in basic computing skills and office tasks such as typing, copying, answering phones, and office maintenance.

Independence Unlimited

VDBHDS



P.O. Box 365
225 Boone Trail Rd.
Duffield, VA 24219
Tel: 276-431-4473
Fax: 276-431-4484

Independence Unlimited, a fully integrated training facility for individuals with disabilities, opens doors to challenging and rewarding job opportunities for people with disabilities. Individuals develop marketable job skills that may lead to employment in the community as it fulfills contracts for area businesses.

- Supported Employment
- Work Adjustment Services
- Sheltered Employment

Supported Employment

Intensive on-the-job training and support for people with disabilities places dependable workers in competitive employment.



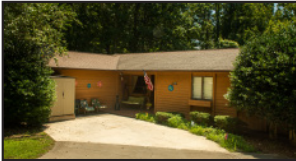
34084 Wilderness Rd.
Jonesville, VA 24263
Tel: 276-346-3590
Fax: 276-346-3612

Outpatient mental health and substance abuse services for adults, children, adolescents, and families. Case management supports treatment by helping individuals figure out what services are needed and empowering through person centered planning.

- Individual & Group Psychotherapy
- Crisis Services
- Psychiatric Services
- Case Management
- Medication Monitoring
- Family Therapy
- Parenting Classes
- Intensive In-Home
- Substance Abuse Recovery Services
- Home-Based Services
- Juvenile Drug Court
- Adult Drug Court
- Children In-between
- Consultation & Education Services
- Virginia Alcohol Safety Action Plan
- Project LINK provides intensive outreach case management, home visitation, and support services to pregnant and parenting women who are “at risk” or are currently abusing substances.

Park Place Group Home

VDBHDS



919 Fraley Ave.
Duffield, VA 24244
Tel: 276-431-4159
Fax: 276-431-2640

- Support for Community Living
- Daily Living Skills

Residential facility for people with intellectual and developmental disabilities that helps residents achieve independence within the community.

Pierce House

VDBHDS



199 Laurel Ridge Drive
Big Stone Gap, VA 24219
Tel: 276-523-1536
Fax: 276-523-1537

- Support for Community Living
- Daily Living Skills

Residential facility for people with serious and persistent mental illnesses that helps residents achieve independence within the community.



197 Laurel Ridge Drive
Big Stone Gap, VA 24219
Tel: 276-523-0028
Fax: 276-523-0029

- Support for Community Living
- Daily Living Skills

Residential facility for people with serious or persistent mental illnesses that helps residents achieve independence within the community.

Scott County Behavioral Health

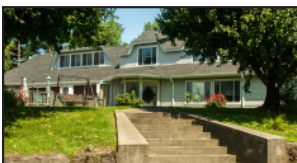


1006 U.S. Hwy 23 N
Weber City, VA 24290
Tel: 276-225-0976
Fax: 276-225-1241

Outpatient mental health and substance abuse programs for children, adolescents, and adults. Case management supports treatment by helping individuals figure out what services are needed, empowering through person centered planning.

- Individual & Group Psychotherapy
- Crisis Services
- Psychiatric Services
- Medication Monitoring
- Case Management
- Intensive In-Home Services
- Home-Based Services
- Substance Abuse Recovery Services
- Consultation & Education Services
- Virginia Alcohol Safety Action Plan
- Juvenile Drug Court
- Adult Drug Court
- Children In-Between
- Project LINK provides intensive outreach case management, home visitation, and support services to pregnant and parenting women who are “at risk” or are currently abusing substances.

Sunhouse



36 King St.
Bristol, VA 24201
Tel: 276-466-2286
Fax: 276-466-2286

- Support for Community Living
- Daily Living Skills

Residential facility for 12 people with intellectual and developmental disabilities that helps residents achieve independence within the community.



Adult Services



Children and Youth Services

43 Champions Ave.
Big Stone Gap, VA 24219
Tel: 276-523-8300
Fax: 276-523-6964

Children & Youth Services
Tel: 276-523-8360
Fax: 276-523-8362

Outpatient mental health and Substance Abuse programs for adults, children, adolescents. Case management supports treatment by helping individuals figure out what services are needed, empowering through person centered planning.

- Individual & Group Psychotherapy
- Psychiatric Services
- Crisis Services
- Medication Monitoring
- Case Management
- Parenting Classes
- Intensive In-Home Services
- Children In-between
- Juvenile Drug Court
- Adult Drug Court
- Consultation & Education Services
- Virginia Alcohol Safety Action Plan
- Project LINK provides intensive outreach case management, home visitation, and support services to pregnant and parenting women who are “at risk” or are currently abusing substances.

PROGRAMS OFFERED AT MULTIPLE LOCATIONS

Adolescent Drug & Alcohol Recovery

Intensive education-based intervention directed at the evaluation, intervention and prevention of alcohol and drug use.

- Individual & Group Counseling
- Family Counseling
- Peer Pressure Communication Skills

Bridging the Gap / Older Adults Project

Mental wellness program to bridge the gap between older adults and their mental health needs.

- Education on Mental Health & Substance Abuse Issues
- Case Management
- Psychiatric Consultation

Child Abuse Prevention

Parent education groups are offered at no charge for parents.

- Parent Education Groups
- Distribution of Parent Education Materials

Children First

A court-mandated program for divorcing parents with children under age 18 is provided using the Children in the Middle curriculums. Preliminary Mediation Education is also given explaining access to Sullivan County's Family Mediators.

- Counseling Classes
- Preliminary Mediation Education

Employment Services

Employment services include:

- Vocational Planning
 - Job Readiness Training
 - Employment Placement Services
 - Individual Placement and Support
 - Supported Employment
 - Job Coaching
 - Ticket to Work
- (<https://choosework.ssa.gov/>)

Family Links

Short-term respite program for families with children who are 2 to 15 years old and have severe emotional disturbances. Family Links serves families in the Tri-Cities area. The program is 8-12 weeks, for 2-4 hours one time per week. The program works with families to improve behavioral issues and social skills. Family Links is free of charge and anyone can make a referral. For eligibility requirements and other guidelines, call 423-232-2665 or 423-232-2719.

- Respite Care Up to 4 Hours One Time Per Week



Mental Health Awareness Training

Contact: 423-895-4436

Mental Health First Aid is an 8-hour course that teaches you how to identify, understand and respond to signs of mental illnesses and substance use disorders. The training gives you the skills you need to reach out and provide initial help and support to someone who may be developing a mental health or substance use problem or experiencing a crisis. Frontier Health provides both the adult and youth version and encourages the faith-based communities to access this training through a SAMSHA funded program.

Additional trainings on specific topics such as Adverse Childhood Experiences (ACES), suicide prevention, parenting, and other behavioral health and substance use issues can be provided on request.

Mother-Child Connection

Intensive Outpatient recovery oriented services for women at least 18 years old who are either pregnant, or have dependent children, and who have a substance use disorder or co-occurring mental health and substance use disorder, including specialized treatment to deal with the unique problems women face.

- Co-occurring Treatment
- Substance Abuse Treatment
- Individual, Family & Group Therapy
- Other Recovery Oriented Services
- Medical Evaluation Referral
- Health Education
- Relapse Education
- Follow-Up Services
- Case Management



Project BASIC

Classroom program targets appropriate expressions of feelings, social skills, conflict resolution and problem-solving skills with fun, challenging activities.

- Mental Health Education
- Early Intervention
- Teacher Consultation
- School Climate Projects



Recovery Education Center

Victory Center is a psychosocial rehabilitation program that operates as a Recovery Center. Victory Center helps individuals to address symptoms and struggles related to mental illness and/or addiction and to reach goals associated with symptom reduction, supports, employment and community living.

Victory Center works with outpatient services, case management, supported housing, peer support centers, employment services, and psychiatric hospitals to help individuals make the most of the recovery process.

- WRAP (Wellness Recovery Action Plan)
- Recovery Education
- Psycho-Education
- Advocacy
- Community Integration
- Life Skills Classes, Healthy Lifestyles
- Leisure Education
- Co-occurring Services

Regional Intervention Program (RIP)

RIP is a free, internationally recognized parent-implemented program that helps parents work with their own children with behavior problems. Experienced RIP parents provide training to newly enrolled families. Children must be enrolled before their 6th birthday.



- Professional Resource Staff
- Behavior Management Training
- Classroom Programs
- Social Skills Training
- Preschool Intervention
- Follow-Up Services

Student Assistance Program

Clinical services for at-risk students with academic, social, and/or behavioral problems. Helps schools maintain safe, disciplined learning environments. Consultation for teachers and collaboration with counselors is provided.

- Group & Individual Counseling
- Crisis Intervention
- Parent Education & Counseling
- Violence Prevention Curriculum
- Referrals
- Assessment, Intervention for Alcohol or Tobacco Offenses
- Life Skills Training

Substance Abuse Prevention Program

A school- and community-based program leads students in a small group process of 12 sessions.

Helps Students:

- Identify Personal Problems
- Develop Problem Solving Skills
- Restore Productivity
- Seek Help
- Develop Resiliency

LOCATIONS QUICK INFO

TENNESSEE

Carter County, TN

Charlotte Taylor Center PG 7

426 East G. St.

Elizabethton, TN 37643

Tel: 423-547-5950

Greene County, TN

Church Street Pavilion PG 8

616 E. Church St., Ste. A

Greeneville, TN 37743

Tel: 423-639-3213

Crockett Apartments PG 10

1006 Arnold Road

Greeneville, TN 37743

Tel: 423-639-3886

Crockett Group Home PG 10

801 Arnold Road

Greeneville, TN 37743

Tel: 423-639-3886

Freedom Peer Support PG 11

616 E. Church St., Ste. A

Greeneville, TN 37743

Tel: 423-639-1313

Nolachuckey-Holston Mental Health PG 20

401 Holston Drive

Greeneville, TN 37744

Tel: 423-639-1104

Victory Center - Greeneville PG 29

616 E. Church St., Ste. A

Greeneville, TN 37743

Tel: 423-638-4540

Hancock County, TN

Hancock County Mental Health PG 15

210 River Road

Sneedville, TN 37869

Tel: 423-733-1540

Hancock County Peer Support PG 15

210 River Road

Sneedville, TN 37869

Tel: 423-733-1540

Hawkins County, TN

Hawkins County Mental Health PG 16

101 Lena Drive

Rogersville, TN 37857

Tel: 423-272-9239

Johnson County, TN

Higher Ground Peer Support Center PG 16

873 S. Shady St

Mountain City, TN 37683

Tel: 423-727-8685

Johnson County Counseling Center PG 18

318 Donnelly St.

Mountain City, TN 37683

Tel: 423-727-2100

Sullivan County, TN

Assessment & Forensic Services -

Kingsport PG 4

2001 Stone Brook Place

Kingsport, TN 37660

Tel: 423-224-1318

Bristol Apartments PG 5

2951 Broad St.

Bristol, TN 37620

Tel: 423-306-4488

Bristol Regional Counseling Center PG 6

26 Midway St.

Bristol, TN 37620

Tel: 423-989-4500

Eldreth Home PG 10

2301 E. Center St.

Kingsport, TN 37664

Tel: 423-247-4000

Fairmount Group Home PG 11

719 Kentucky Ave.

Bristol, TN 37620

Tel: 423-968-2532

Friendship Connection Peer Support PG 12

2017 Stonebrook Place

Kingsport, TN 37660

Tel: 423-247-0160

Frontier Industries – Bristol PG 13

1135 Volunteer Parkway, Suite 14

Bristol, TN 37620

Tel: 423-878-1600

Frontier Industries – Kingsport PG 13

2017 Stonebrook Place

Kingsport, TN 37660

Tel: 423-224-1417

Grant-Widner PG 14

4121 Old Jonesboro Road

Bristol, TN 37620

Tel: 423-652-7378

Holston Children & Youth PG 17

2001 Stonebrook Place

Kingsport, TN 37660

Tel: 423-224-1000

Holston Counseling Center PG 17

1570 Waverly Road
Kingsport, TN 37664
Tel: 423-224-1300

Holston Residence PG 18

1800 Mountain View Road
Kingsport, TN 37664
Tel: 423-247-6340

Kingsport Apartments PG 18

1326 Tranbarger Drive
Kingsport, TN 37665
Tel: 423-247-4000

Link House PG 19

433 New Beason Well Road
Kingsport, TN 37660
Tel: 423-288-1828

Moore House PG 19

2940 Broad St.
Bristol, TN 37620
Tel: 423-968-1681

Open Arms Peer Support Center PG 20

266 North St.
Bristol, TN 37620
Tel: 423-274-8100

Roller-Russ PG 21

2221 Memorial Court
Kingsport, TN 37660
Tel: 423-245-1121

SAFE House PG 21

P.O. Box 3426
Kingsport, TN 37664
Tel: 844-578-7233

Sullivan House PG 24

852 Youth Center Road
Blountville, TN 37617
Tel: 423-279-2150

Tennessee Community Support PG 24

266 North St.
Bristol, TN 37620
Tel: 423-989-4558

TRACES PG 25

2001 Stonebrook Place
Kingsport, TN 37660
Tel: 423-224-1067

Victory Center - Kingsport PG 29

2017 Stonebrook Place
Kingsport, TN 37660
Tel: 423-224-1417

Unicoi County, TN

Erwin Behavioral Health Services PG 11

218 N. Main St.
Erwin, TN 37650
Tel: 423-743-1470

Washington County, TN

Adventure Program PG 4

1003 Broadway St.
Johnson City, TN 37601
Tel: 423-232-4326

Behavioral Respite Services PG 5

200 Quarry Road
Johnson City, TN 37601
Tel: 423-926-1595

Chatam Apartments PG 7

2911 Chatam Drive
Johnson City, TN 37601
Tel: 423-423-306-4488

**Communication Center for the Deaf
and Hard of Hearing PG 8**

2243 Eddie Williams Road
Johnson City, TN 37601
Tel: 423-434-0447

Crisis Stabilization Unit PG 9

Turning Point
208 E. Unaka Ave.
Johnson City, TN 37601
Tel: 877-928-9062

Friendship House Peer Support PG 12

2243 Eddie Williams Drive
Johnson City, TN 37601
Tel: 423-232-4264

Frontier Health Corporate PG 12

1167 Spratlin Park Drive
Gray, TN 37615
Tel: 423-467-3600

Gibson Place PG 14

208 & 210 Quarry Road
Johnson City, TN 37601
Tel: 423-232-7234

Laurel House PG 19

516 Swadley Road
Johnson City, TN 37601
Tel: 423-926-9001

Plymouth Road Apartments PG 20

2802 Plymouth Road
Johnson City, TN 37601
Tel: 423-926-9001

Spring House PG 24

1113 King Springs Road
Johnson City, TN 37601
Tel: 423-928-4802

Turning Point PG's 25-28

208 E. Unaka Ave.
Johnson City, TN 37601
Tel: 423-926-0940

Victory Center - Johnson City PG 29

2243 Eddie Williams Road
Johnson City, TN 37601
Tel: 423-975-6000

Watauga Behavioral Health PG 30

109 W. Watauga Ave.
Johnson City, TN 37604
Adult Tel: 423-232-2600
Children & Youth Tel: 423-232-2700

Willow Ridge PG 31

900 Buffalo St.
Johnson City, TN 37604
Tel: 423-461-7750

VIRGINIA

Lee County, VA

Appalachia Court Apts. PG 33

250 Park St.
Jonesville, VA 24263
Tel: 276-346-3590

Lee County Behavioral Health PG 35

34084 Wilderness Road
Jonesville, VA 24263
Tel: 276-346-3590

Scott County, VA

Addington Hall PG 32

1431 Duff-Pat Hwy.
Duffield, VA 24244
Tel: 276-431-4370

Independence Unlimited PG 34

225 Boone Trail Road
Duffield, VA 24244
Tel: 276-431-4473

Park Place Group Home PG 35

919 Fraley Ave.
Duffield, VA 24244
Tel: 276-431-4159

Scott County Behavioral Health PG 36

1006 U.S. Hwy 23 N
Weber City, VA 24290
Tel: 276-225-0976

Washington County, VA

Sunhouse PG 36

36 King St.
Bristol, VA 24201
Tel: 276-466-2286

Wise County, VA

Bargains Unlimited Thrift Store PG 33

622 Powell Ave. East
Big Stone Gap, VA 24219
Tel: 276-523-7783

Developmental Services PG 33

622 Powell Ave. East
Big Stone Gap, VA 24219
Tel: 276-523-0682

Four Seasons Greenhouse PG 34

2637 4th Ave. East
Big Stone Gap, VA 24219
Tel: 276-523-4028

Independence House PG 34

2532 4th Ave. East
Big Stone Gap, VA 24219
Tel: 276-523-4357

Pierce House PG 35

199 Laurel Ridge Drive
Big Stone Gap, VA 24219
Tel: 276-523-1536

Polly Summit PG 36

197 Laurel Ridge Drive
Big Stone Gap, VA 24219
Tel: 276-523-0028

Wise County Behavioral Health PG 37

43 Champions Ave.
Big Stone Gap, VA 24219
Adult Tel: 276-523-8300
Children & Youth Tel: 276-523-8360

SAFE Place

Tel: 1-800-RUNAWAY (1-800-786-2929)

**Employee Assistance
Program Contract Services**

P.O. Box 9054
Gray, TN 37615
Tel: 423-467-3719

**Crisis Services Tennessee:
Adults, Children & Youth**

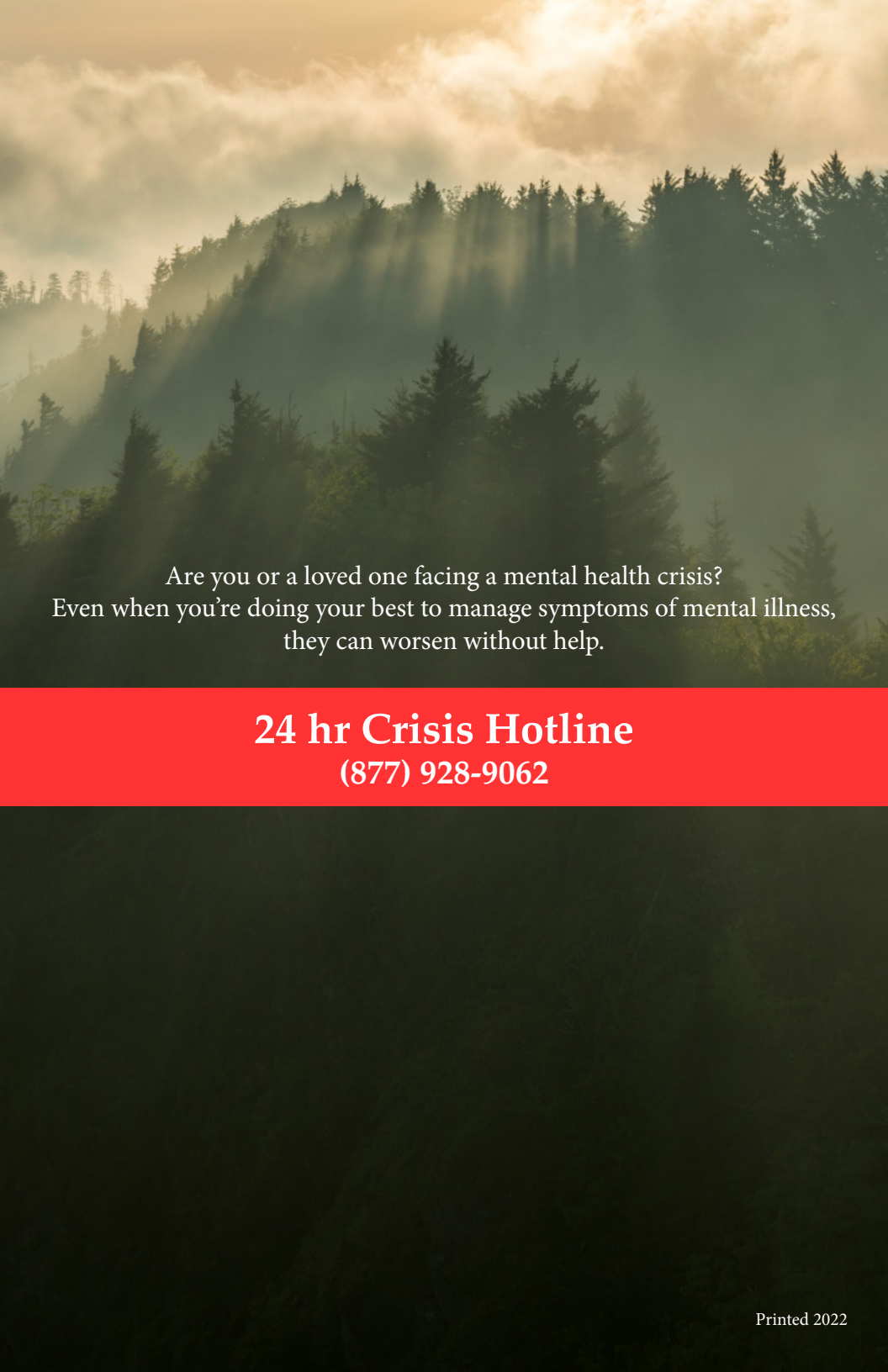
Turning Point
208 E. Unaka Ave.
Johnson City, TN 37601
Tel: 877-928-9062

**Crisis Services - Virginia:
Adults, Children & Youth**

Tel: 877-928-9062

NOTES

[illegible]



Are you or a loved one facing a mental health crisis?
Even when you're doing your best to manage symptoms of mental illness,
they can worsen without help.

24 hr Crisis Hotline
(877) 928-9062

Frontier Health is the region's leading provider of behavioral health, mental health, substance abuse, co-occurring, intellectual and developmental disabilities, recovery and vocational rehabilitation services.

Providing care since 1957, our mission is to provide quality services that encourage people to achieve their full potential.

Frontier Health's services provides a seamless program of personalized care. We offer a range of care to help you successfully move toward and sustain your recovery.

P.O. Box 9054
1167 Spratlin Park Dr.
Gray, TN 37615

423-467-3600 • 888-291-1935

Fax: 423-467-3710

frontierhealth.org



**Frontier
Health®**

Where

People Are Important